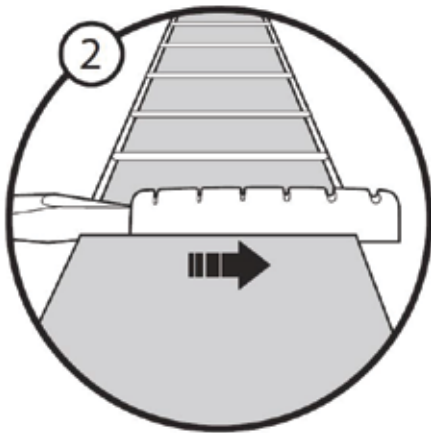
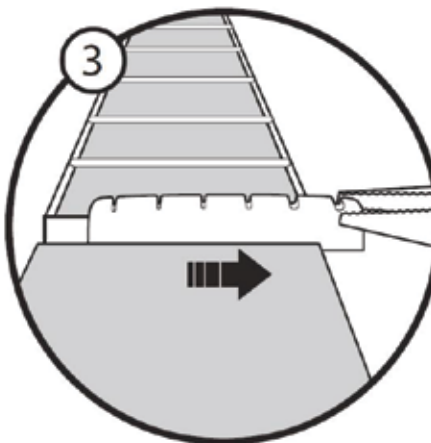


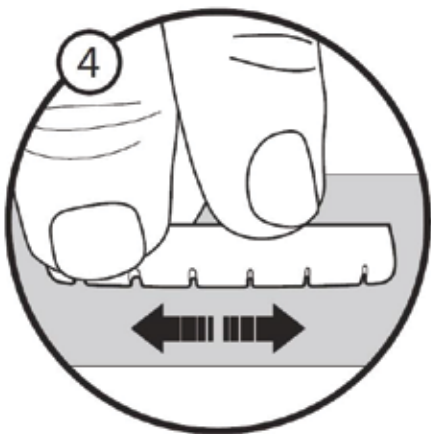
## Installing a Blank Nut



If the nut is not sitting in a slot, and just butted up against the neck, usually a light tap with a small block will set it free. If it is sitting in a slot, gently tap it out sideways using a hammer and a screwdriver. If you pull it out upwards, you risk taking some of the wood with it.



1. Clean nut shelf
2. Surface the front face on a flat surface (up to 600 grit)
3. Surface the back face – sanding down the nut to the correct thickness
4. Surface the bottom edge 90 degrees to the front and back faces
5. Once you have a snug fit... Center the blank fingerboard
6. Rough cut and finish the ends flush with the fingerboard and shelf

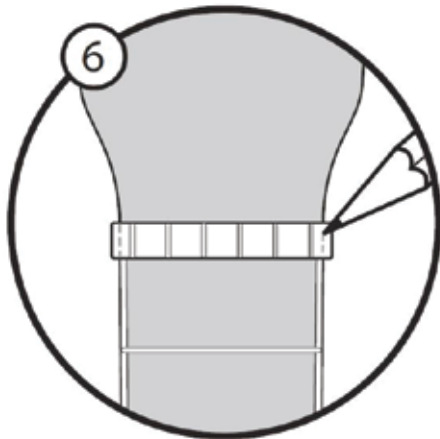


7. Mark the height of the frets on the nut using a flat pencil (sand a pencil in half so that it has a flat surface of around 3" on the sanded side)
8. Measure up from the fret height mark 0.045" on bass side and 0.25" on treble side
9. Mark an arc matching the fingerboard radius between these two points



10. Surface the top edge of the nut down to the arc. The top edge of the nut should slant down from front to back in a slight arch matching the angle of the headstock

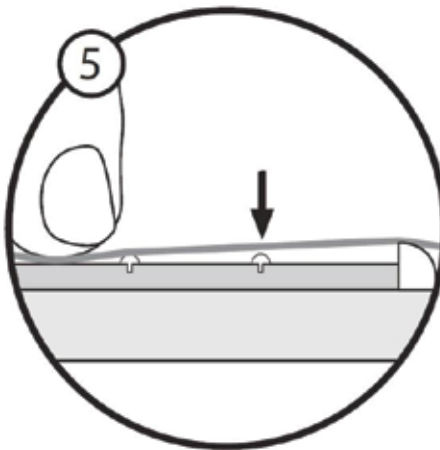
11. Resurface the back face of the nut so that the nut is 0.020"-0.025" thinner front to back at the top than at the bottom



12. Locate the String Slots, measuring in 1/8" from either end of the fingerboard for each E string, then locating the remaining strings using the String Spacing Ruler

13. Notch the slots with a knife, thin file, or saw. Recheck the spacing before cutting deeper

14. Slightly round the top edge of the nut on the ends, from the outside of each E string slot to a little above the fingerboard, leaving a clear line between the top of the nut and the round over



15. String the guitar up with the proper strings and adjust the neck bow

16. Adjust the depth of the nut slots using the gauged nut files so that you have between .002" and 0.005" of clearance above the 1st fret when holding down the string at the 3rd fret

17. Adjust the height of the nut so that 1/2 to 3/4 of the E, A, and D strings are within the nut slots

18. Polish out nut

19. Glue nut in place using a drop of wood glue.

